

# 2020 Maggie Fischer Memorial Cross Bay Swim Logistics

## July 24<sup>th</sup>, 2020



## NYS Compliance Guidelines: [NYS Sports and Recreation Safety Guidance](#)

### Timeline

#### Thursday 7/23

Time	Activity
6:00 PM	Registration opens at Gilbert Park
8:00 PM	Registration Closes at Gilbert Park Registration on at Fire Island - see instructions below

#### Friday 7/24

Time	Activity
5:15 AM	Start Arriving at Robert Moses Field 5 or Turnaround drop-off point
6:30 AM	Latest drop-off time
8:00 AM	Start of swim
8:00 AM	Gilbert Park Opens for team pickup vehicles
9:30 AM	Swimmers begin arriving at Gilbert Park
12:00 PM	Swim Ends
1:00 PM	Close and Exit Gilbert Park

## Before the Swim

- Swimmers who are not able to train sufficiently should consider not swimming this year
- Swimmers traveling from out of town may be required to be tested for COVID 19
- Any swimmer who is not feeling well or running a temperature prior to the swim is obligated to drop out
- Swimmers should be considerate of their support team if not from the same family group, please take appropriate measure to protect yourself, kayaker and support driver prior to and while at the event
- Masks will be required on land at all times. No exceptions. Be prepared!
- There will be a MANDATORY online meeting on July 17 at which attendance will be taken. This is to ensure all new procedures are understood. Zoom details will be emailed.
- Mark your kayak with name and address

## Registration Procedures

**Registration material must be picked up Thursday July 23. There will be NO registration at FI Lighthouse.**

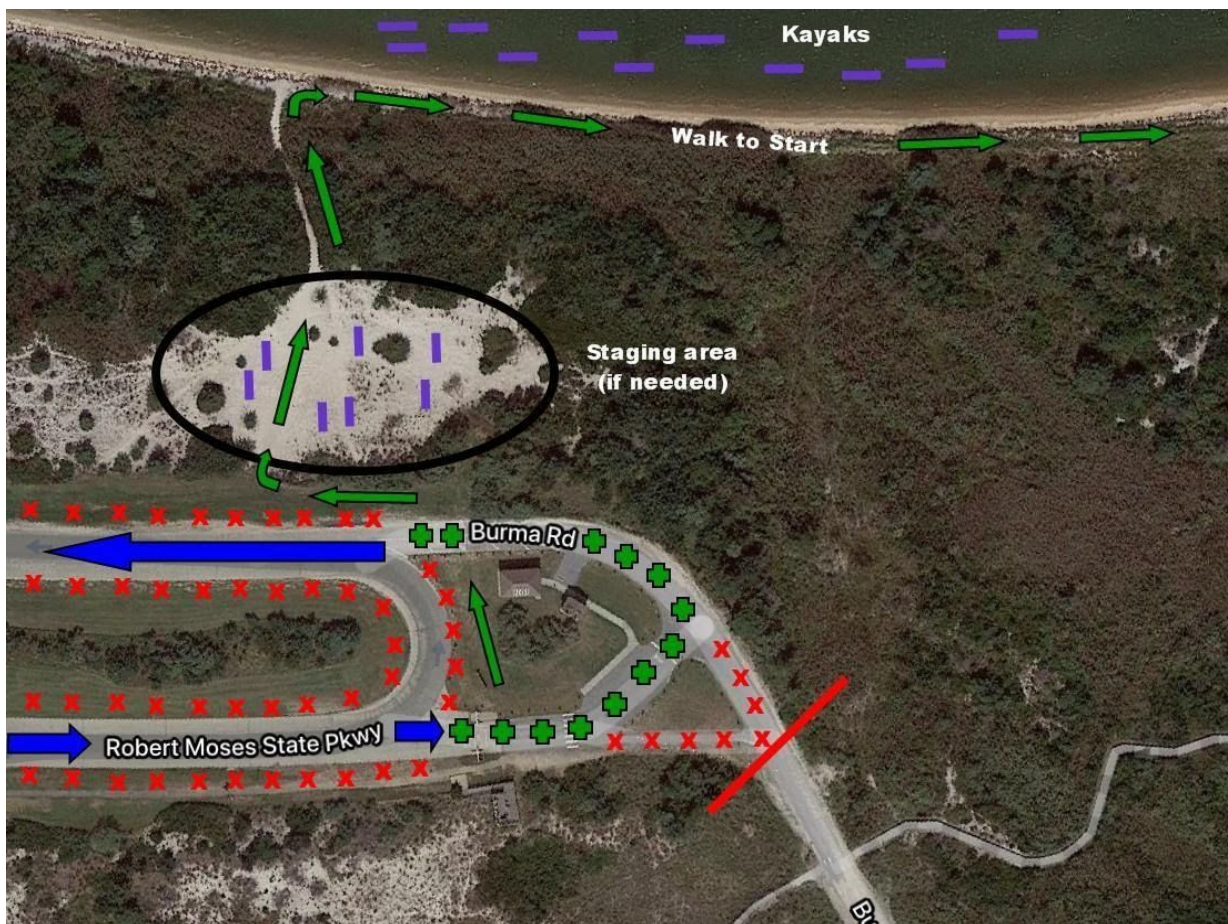
- Vehicle arrives at Gilbert Park West Gate (Concourse East, Brightwaters) at 6 PM
- Drive thru, stop and pick up your registration material bag, exit. See diagram below.
- Included in bag:
  - One-page summary of swim day procedures
  - Swimmer Cap
  - Kayaker pinny and whistle
  - Phone pouch
  - Swimmer and kayaker t-shirts
  - 2020 Decal
  - Vehicle parking permits (2) for dashboard display, needed to enter Gilbert Park day of swim
  - Disposable timing chip
  - USCG kayak tag (if available)
- **Saltaire registration 'by appointment only'**. Will be run by Rich Wilde and administered by lifeguard Molly Lesser. If you are on the list you can pick up your packet in the lifeguard office on Pommander Walk Thursday between 10:00 - 5:00pm. Or call Molly Lesser 914.263.6195
- Bring your own masks and use them!



## Burma Road turnaround

Refer to diagram below. We have special, limited permission to use this area. There is **NO PARKING** along this area. Pull off the turnaround (green marks) and remove equipment. The car must exit the area quickly. Cars are not allowed on Burma Road past the turnaround!

- No beach body-marking this year, please number either arm at home
- Park on left and right at the Burma Road turnaround at the end of Robert Moses Parkway past RM Field 5
- Temperatures will be taken of all participants at the dropoff point. Toilets are available at the turnaround.
- **ABSOLUTELY NO PARKING ON ROBERT MOSES PARKWAY, LOOP AROUND AND COME BACK IF NO PARKING AVAILABLE ON LOOP WHEN YOU ARRIVE, DO NOT BLOCK ACCESS TO LIGHTHOUSE RD WHEN DROPPING KAYAK**
- If there are any issues with Burma Rd the alternate plan will be to pull into Robert Moses Field 5 and unload kayaks at far end of parking lot, this will add 5-10 minute walk to the beach with your kayak
- Masks must be worn from the time you enter the path to the beach until you are on or in the water
- Remove kayak as quickly and safely as possible
- Make sure you have all needed items for the swim: pinney, timing chip, phone, masks, etc.
- Proceed to beach immediately keeping personal distancing measures in mind. **Watch out for poison ivy!**
- Vehicle should exit area as soon as possible If returning to field 5 to park to watch start use boardwalk to return to beach, masks must be worn
- Kayaks should launch as soon as they reach the beach, masks can be removed once launched, once on water, paddle down to your swimmer's location to await start, place mask back on if you go to shore



## Staging for the Start

We will use the entire area west of the Lighthouse dock (green area on the map below). A Swim safety officer will assist teams and direct them where to go.

- Swimmers should walk down the beach to their starting location and prepare, masks must be worn while on beach
- Swimmers will need to show their cap and kayakers their pinny to enter the start area, do not forget them!
- Team locations will be 6 feet apart. Space yourselves accordingly.
- Kayakers will position on farm shoal and maintain personal distance while awaiting their swimmers.
- Masks are mandatory
- Each swimmer MUST check-in with The Swim's safety officer (keeping personal distance). Saltire swimmers MUST check-in with Molly Lesser before leaving for the Lighthouse. We need your name for an accurate count!
- Toilets are available in the building at the south end of the dock walk.



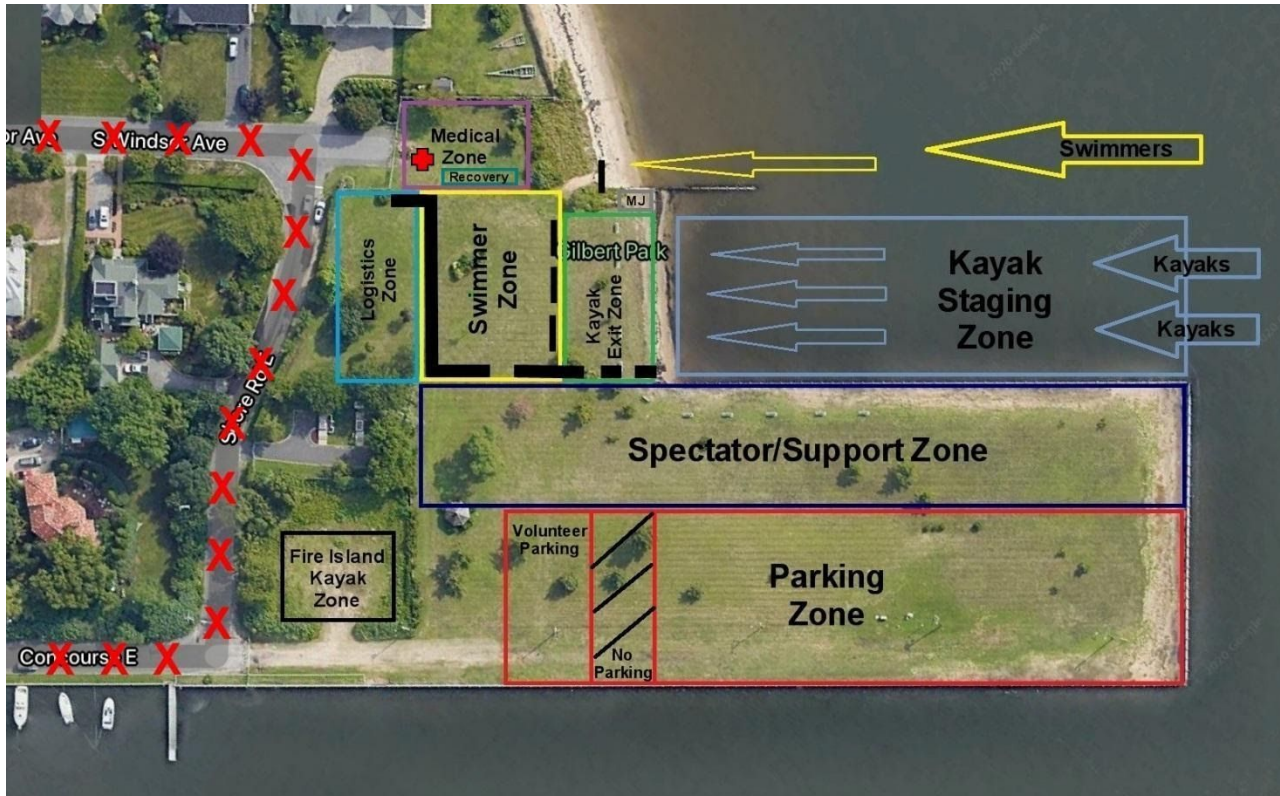
## On the Water Considerations

- Support boats will have personal protection (masks) for the possible event where a swimmer needs to be pulled in. Masks will be available to provide to and swimmer needing to enter a boat.
- Swimmers: know your kayakers and take appropriate precautions when taking water during the swim, rinsing water bottles off in the water before drinking
- When approaching the finish please try not to bunch up in the finish chute, move to the beach to the right of the finish banner if a lot of swimmers are coming through at the same time, spread out and don't bunch up
- Swimmers should yield to lead swimmer at finish once the outer bulkhead is reached
- The bay is quite warm this year. You may not want a wetsuit.

# Gilbert Park Considerations

Gilbert Park will be closed to non-participants. Only cars with parking permits issued by The Swim are allowed.

- NO HUGGING OR HAND SHAKING PLEASE, We want everyone to stay as safe as possible
- Popup tents will be used for the logistics area and medical. That will provide shade for key areas and a landmark for the swimmers.
- A tape fence will create the barrier between swimmer/kayaker areas and everything else.
- There will be no showers, no nurses tent. An ambulance will be in attendance for emergencies
- There will be one porta-potty with sink, water and soap
- Respect the zones established to keep swimmers/kayakers separate from volunteers



## Vehicle and support instruction at Gilbert Park

- Gilbert Park will open before 0500 for vehicles that have Swim permits. Vehicle must display permit sheet on dash to be allowed in
- Absolutely no on street parking, no walk ins allowed. No exceptions. Participants only.
- Once inside Gilbert Park, please park where instructed. Refer to map above.
- Exit vehicle when ready to watch finish and remain in swimmer area only, masks must always be worn when outside vehicle
- Watch for your swimmer to arrive, move to kayak extraction area and remove kayak with kayaker when instructed
- Await swimmer to exit swimmers-only area to depart swim. Do not congregate.

## Swimmer water exit

- Tables will be set up coming out of the water for towel and water bottle. Volunteer will place items on the table for swimmer to pick up. Swimmer must place mask on ASAP.
- If you are unable to wear a mask for any reason after leaving the water, please move to the recovery zone at the front of the medical area and personal distance while recovering or getting assistance.



## Kayak water exit

- Kayaks will separate from swimmer just before reaching Gilbert Park and move to kayak extraction area in the bulkheaded section to the left of the finger pier. No kayak will be allowed to land until mask is on.
- Kayakers should form a queue in the water and wait to be told to come to shore.
- Kayaks will be lifted into kayak extraction area.
- Kayaker will take the stairs, find support driver and retrieve kayak which will be moved immediately to vehicle.
- If you are unable to wear your mask for any reason after leaving the water, please move to your vehicle or the medical area and personal distance while recovering or getting assistance.
- Please place pinny in plastic bin before exiting the kayak area



July 14, 2020

- Kayaks going back to Fire Island are to be taken to the area at at the North West corner of the park by the main gate as seen in the Gilbert Park map above.

**Kayaks going back to Fire Island MUST BE MARKED BOLDLY  
with YOUR NAME and TOWN!!**

**We request that you leave Gilbert Park as soon as possible after landing. We will party next year!**

**Thank you for your cooperation. Safety first!**